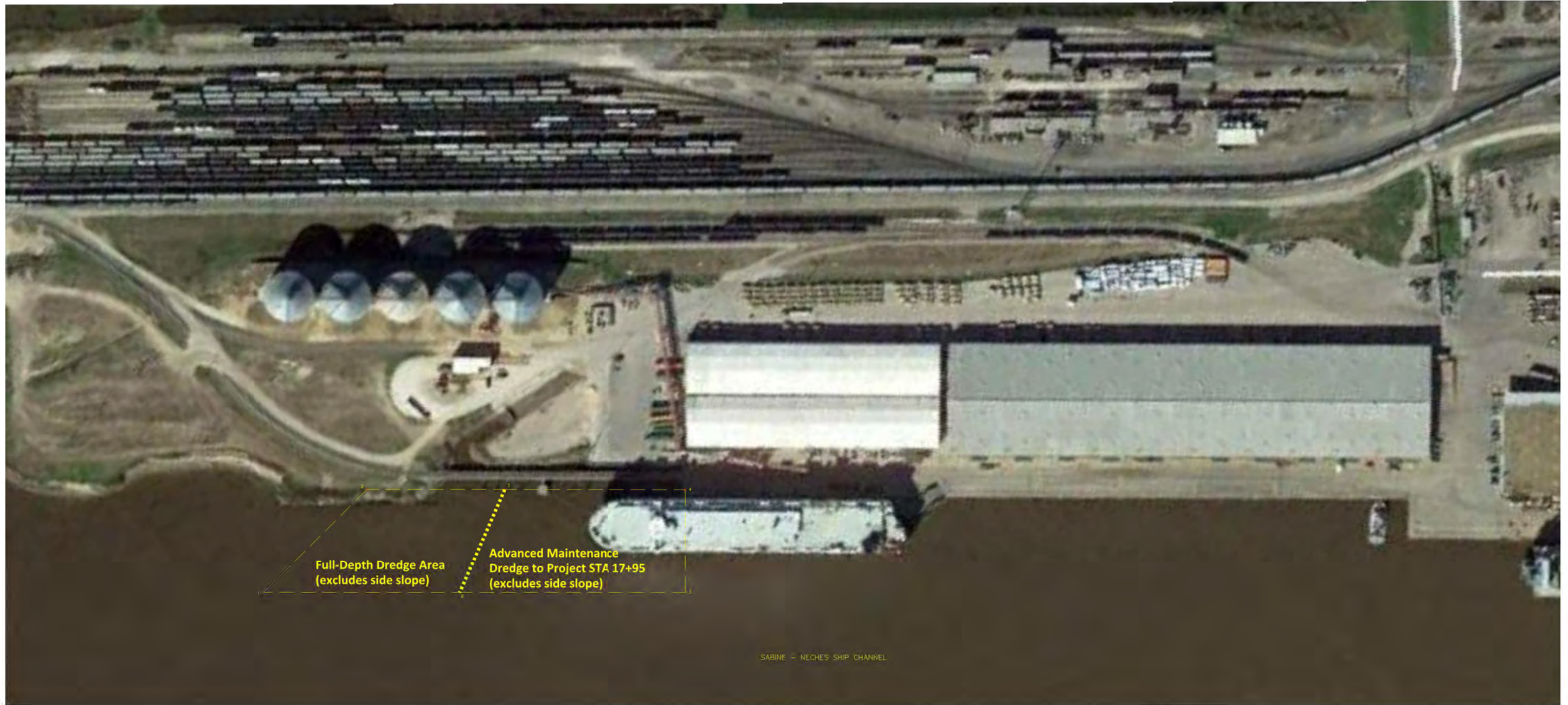
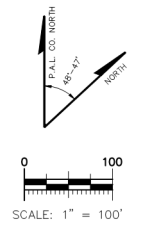


DREDGE LIMIT COORDINATE TABLE		
Point #	Northing	Easting
1	13893335.52	3570922.54
2	13893639.03	3570882.63
3	13893867.88	3571058.91
4	13894167.52	3571289.70
5	13894036.16	3571460.75
6	13893661.81	3571173.03

Northing/Easting are US Survey Feet, based on Texas State Plane Zone 4 (South Central) coordinate system



SURVEYORS NOTES

PRELIMINARY. THIS DOCUMENT SHALL NOT BE RECORDED FOR ANY PURPOSE AND SHALL NOT BE USED OR RELIED UPON AS A FINAL SURVEY DOCUMENT (RELEASE DATE: _____)
ANTHONY M. LEGER
REGISTERED PROFESSIONAL LAND SURVEYOR NO. 5481

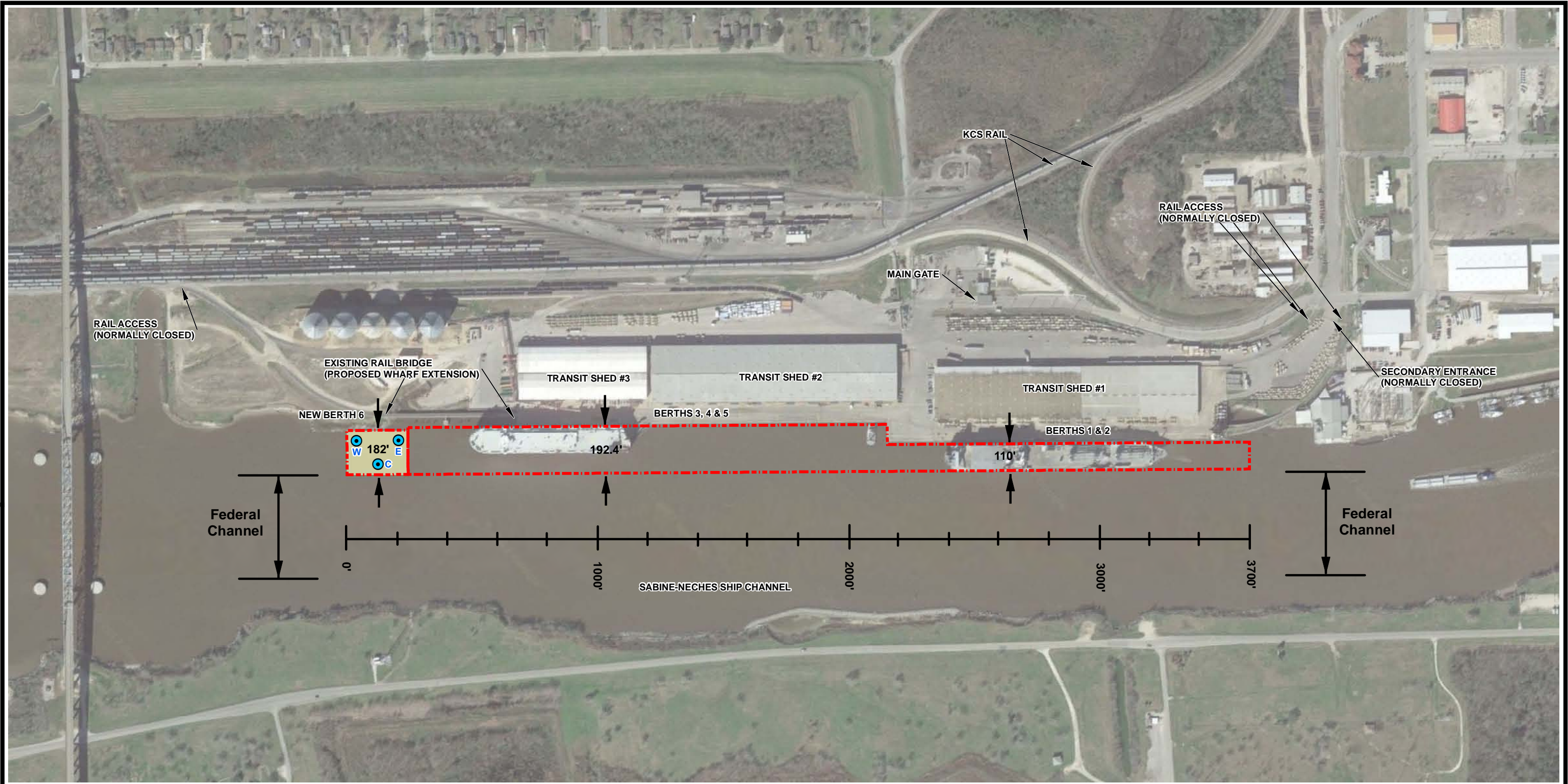


3737 Doctors Drive
Port Arthur, Texas 77642
Tel. 409.985.2004
Fax 409.985.2005
soutexsurveyors.com

SHEET TITLE	
PORT OF PORT ARTHUR JEFFERSON COUNTY, TEXAS	
PROJECT	
COLLINS ENGINEERS, INC. 650 ISLINGTON STREET PORTSMOUTH, NH 03801	

PROJ. NO: 17-0167-A
SCALE: 1" = 100'
PRINT DATE: 5/23/17
DRAWN BY: T. CHASE
CHECKED BY: AML
APPROVED BY: AML
SHEET 1 OF 1

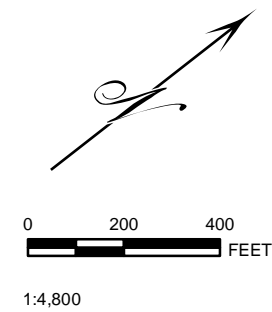
C:\Users\jleger\Documents\Port Arthur\Port Arthur_2017-05-23_17-0167-A.dwg May 23, 2017 4:22pm Texas



LEGEND

- Proposed Sample Locations July 2017
 - Existing Maintenance Dredge Area
 - Proposed New Cut Area
- Lines are based upon coordinates furnished by the Port of Port Arthur, February 2017

Federal Channel - 400' Width
(Outside PoPA Project Area)



**PORT OF PORT ARTHUR
PORT ARTHUR, TEXAS**

**FIGURE 2
PROPOSED MAINTENANCE AND NEW CUT
DREDGING PLAN VIEW**

DRAWN BY: L WILSON	SCALE: AS NOTED	PROJ. NO. PORT DREDGING
CHECKED BY: B DAVIS		Prop Maint and New Cut.mxd
APPROVED BY:	DATE PRINTED:	
DATE: July, 2017	7/11/2017	



4801 Southwest Parkway
Parkway 2, Suite 150
Austin, Texas 78735
512-347-7588

4180 Delaware Street, Suite 402
Beaumont, TX 77706
409-838-4400