



**PORT OF PORT ARTHUR
TRANSIT SHED EXPANSION PROJECT
SURVEY INFORMATION**



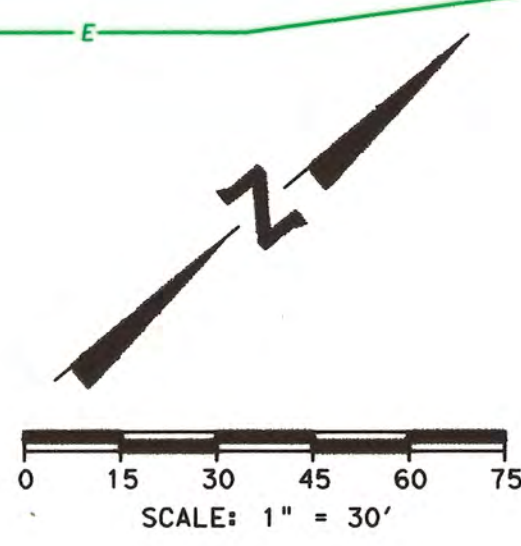
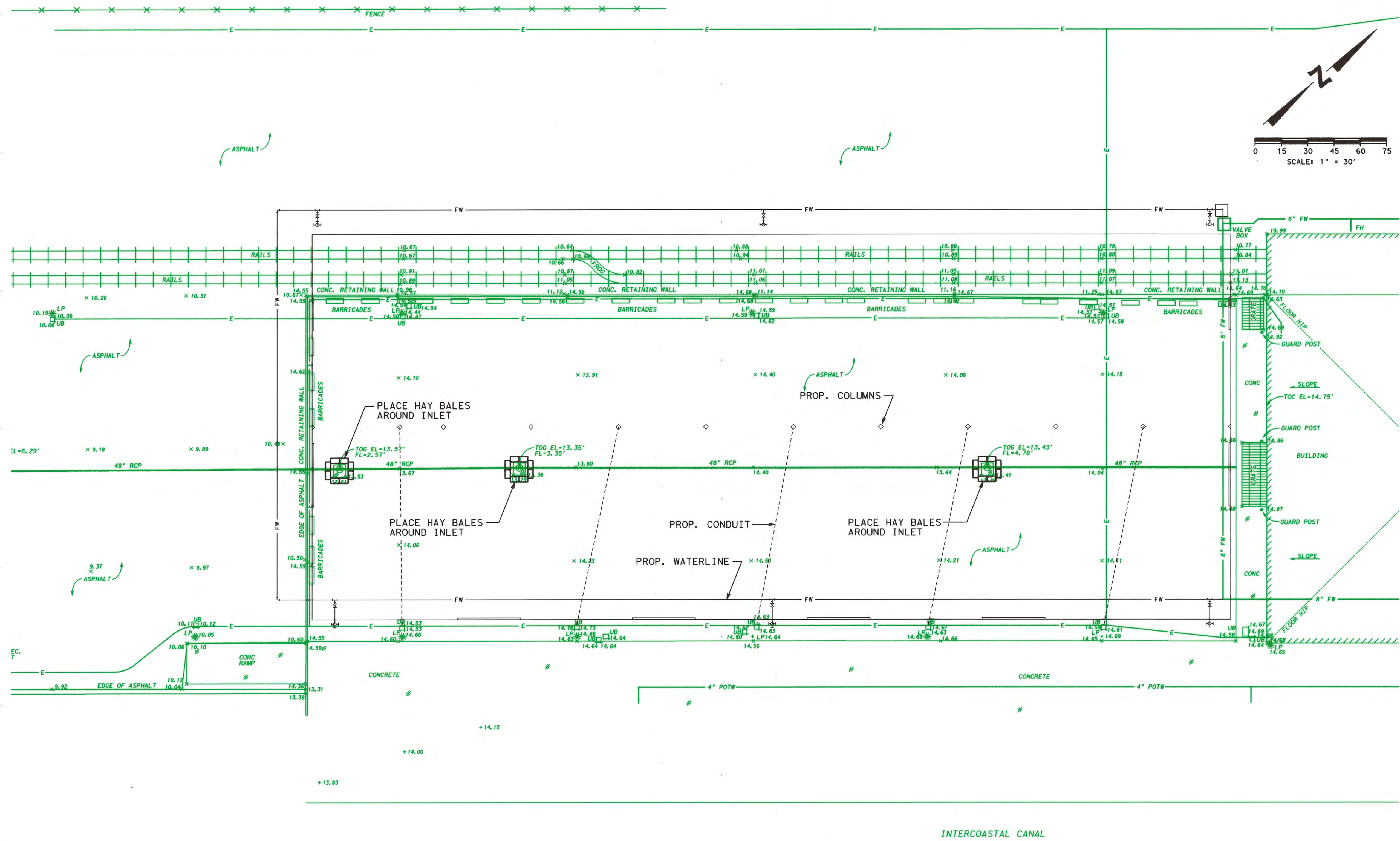
**** NOTE:**
BENCHMARK IS AN "X" IN CONCRETE ON NORTH HEADWALL OVER
CONCRETE LINED DITCH APPROXIMATELY 9' FROM ROAD. CALL
ELEVATION OF 8.24' BY DAVID HOLCOMBE OF MCCARTHY.

© 2002 Mark W. Whiteley & Associates, Inc.
This document, as an instrument of professional service, is the property
of Mark W. Whiteley & Associates, Inc. and is not to be used, reproduced,
copied or distributed, in whole or part without the written authorization of
Mark W. Whiteley & Associates, Inc.

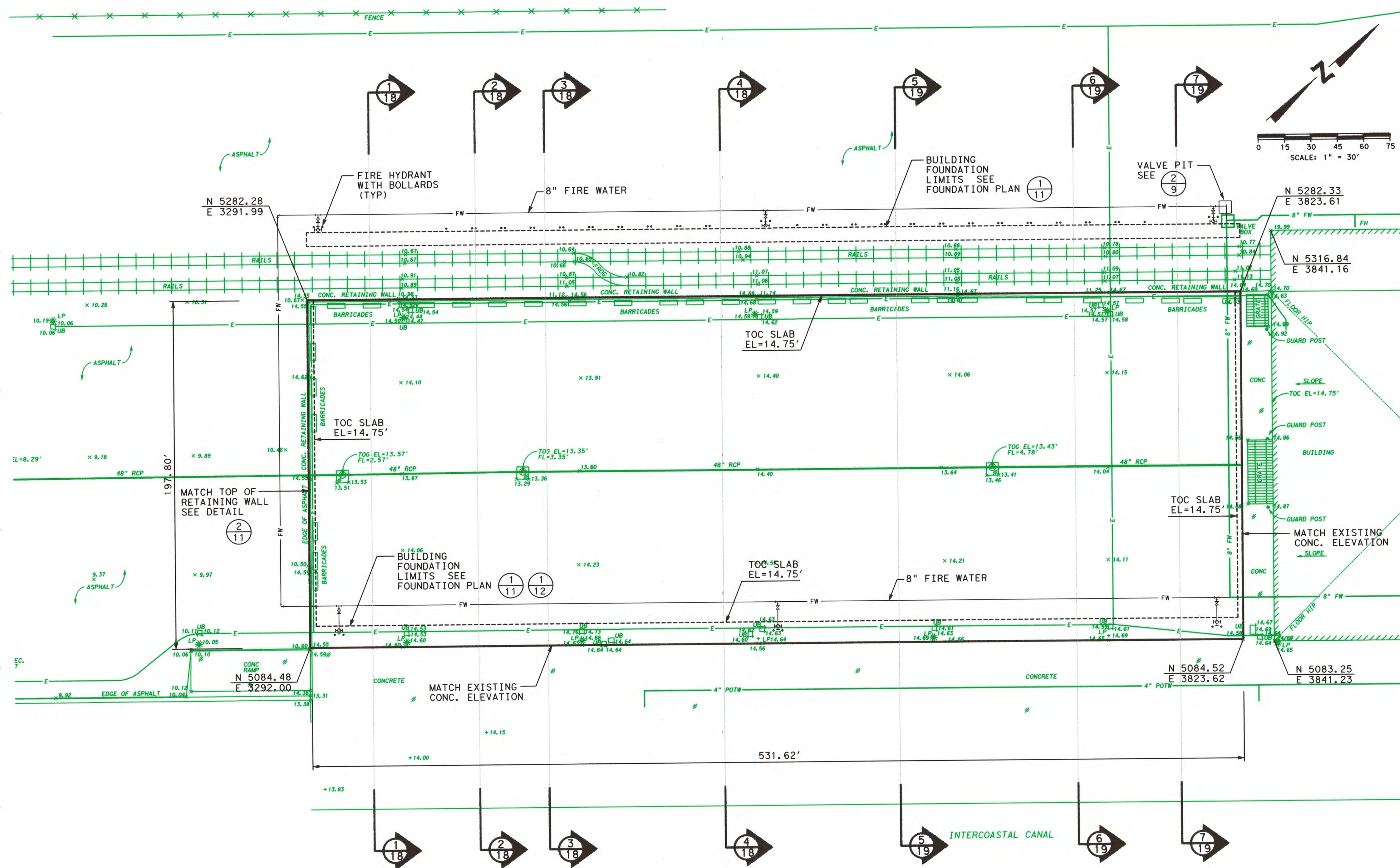
[illegible]

SHEET NO.

2



NO.	REVISION	BY	DATE

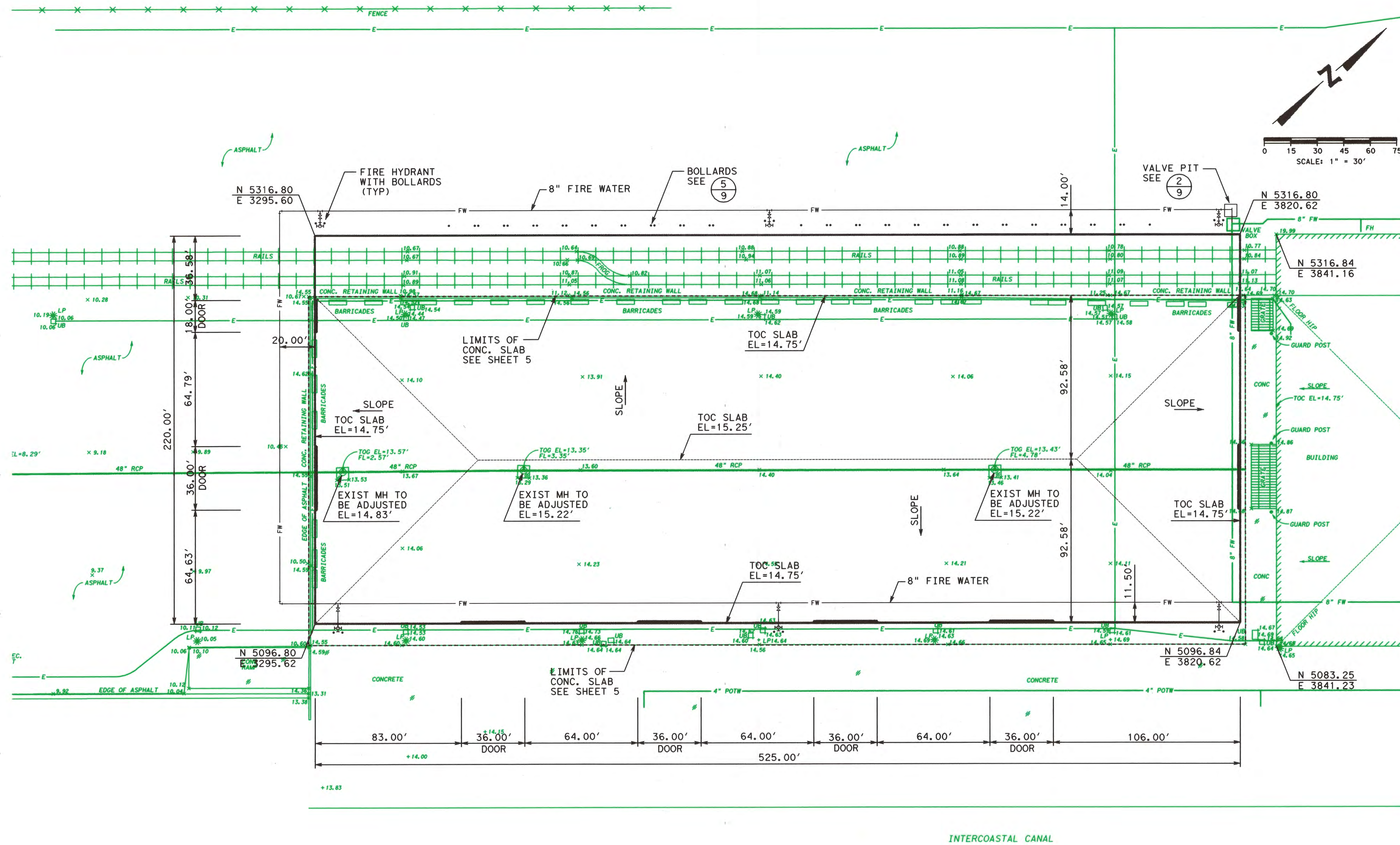


NO.	REVISION	BY	DATE

NO.	REVISION	BY	DATE

SHEET NO.

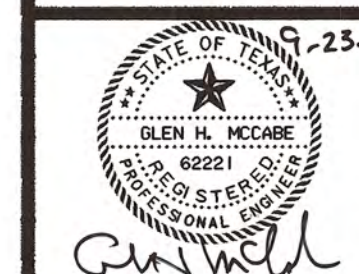
6



AVAILABLE STORAGE
185' x 525' = 97,125 SQ. FT.



PORT OF PORT ARTHUR TRANSIT SHED EXPANSION PROJECT WATER PLAN

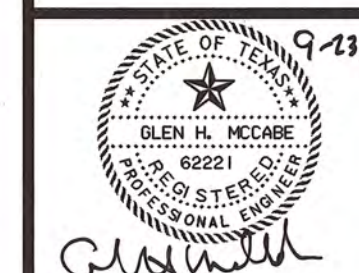
[illegible]

SHEET NO.

•



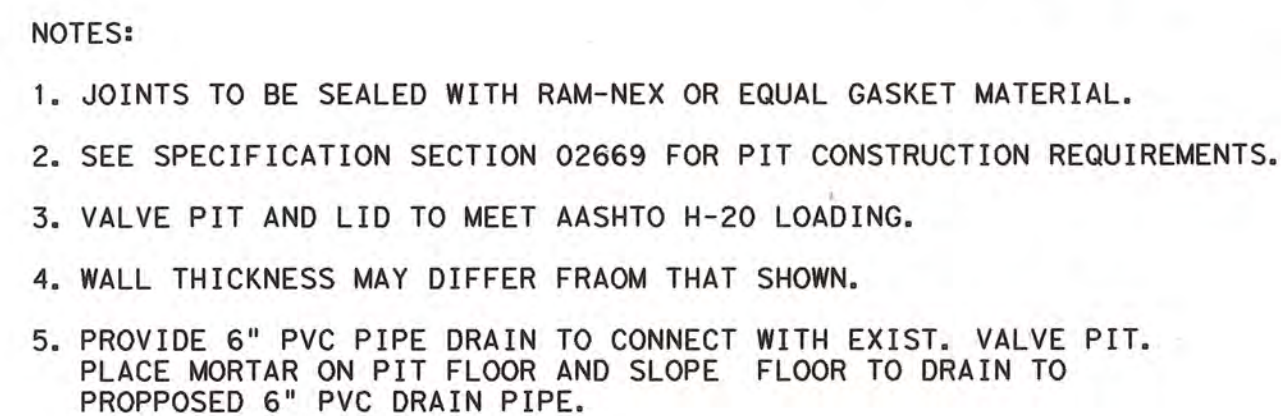
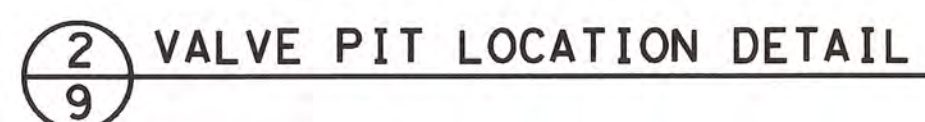
PORT OF PORT ARTHUR TRANSIT SHED EXPANSION PROJECT ELECTRICAL PLAN

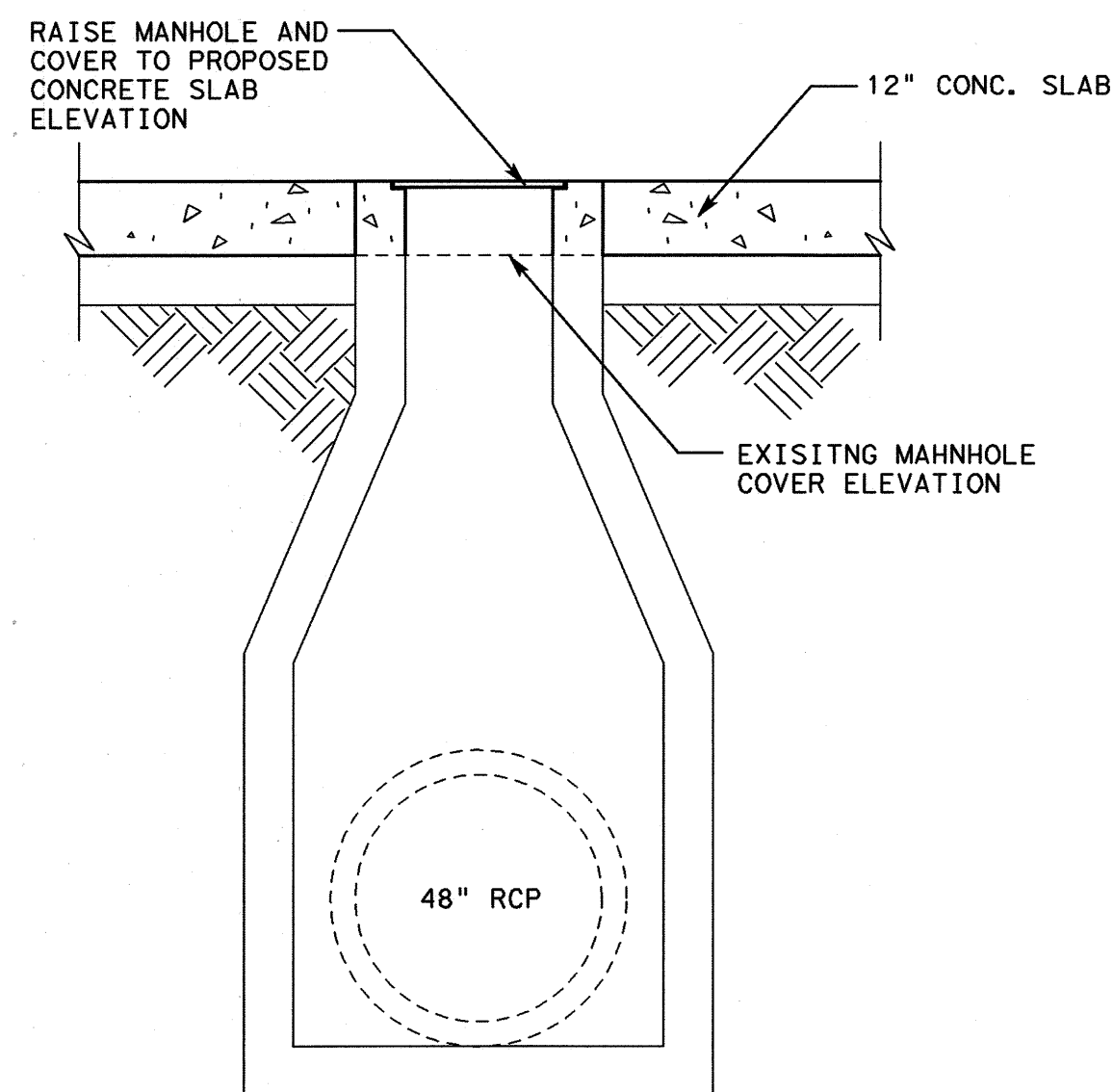
[illegible]

SHEET NO

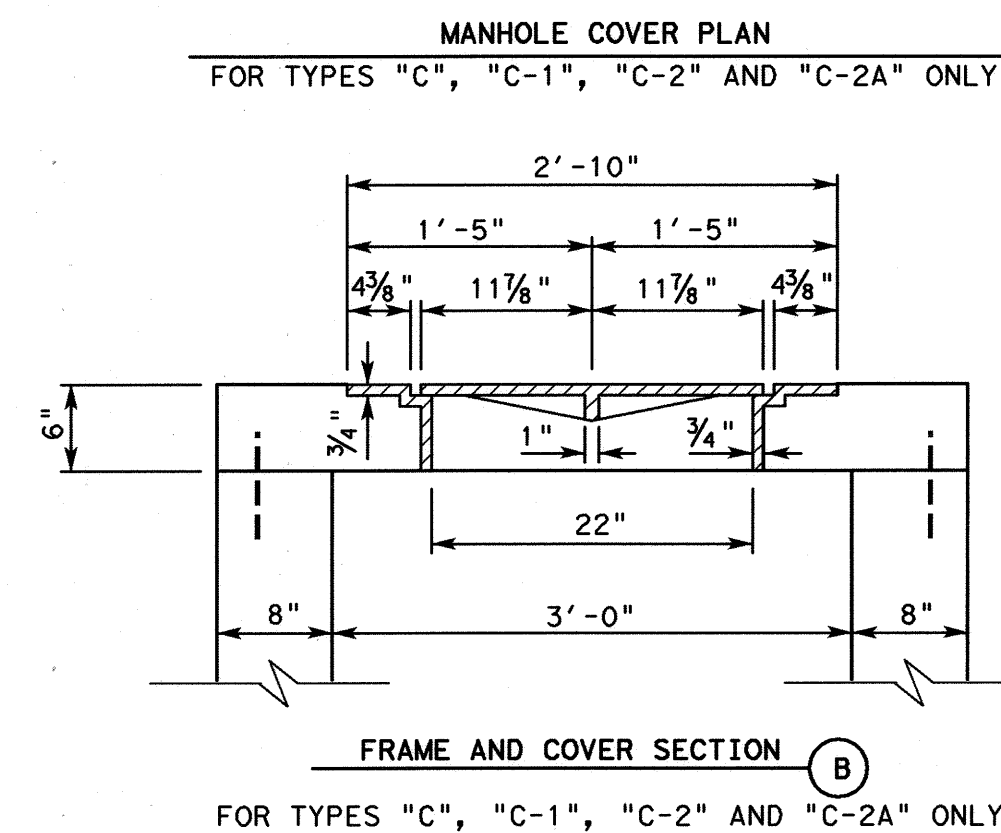
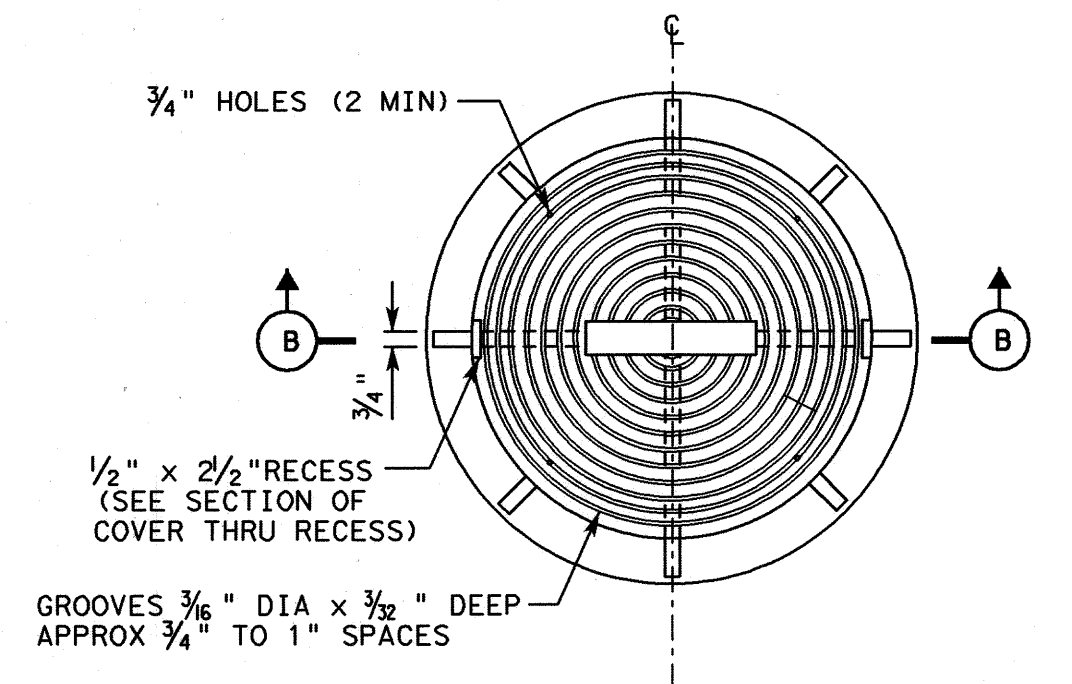
3



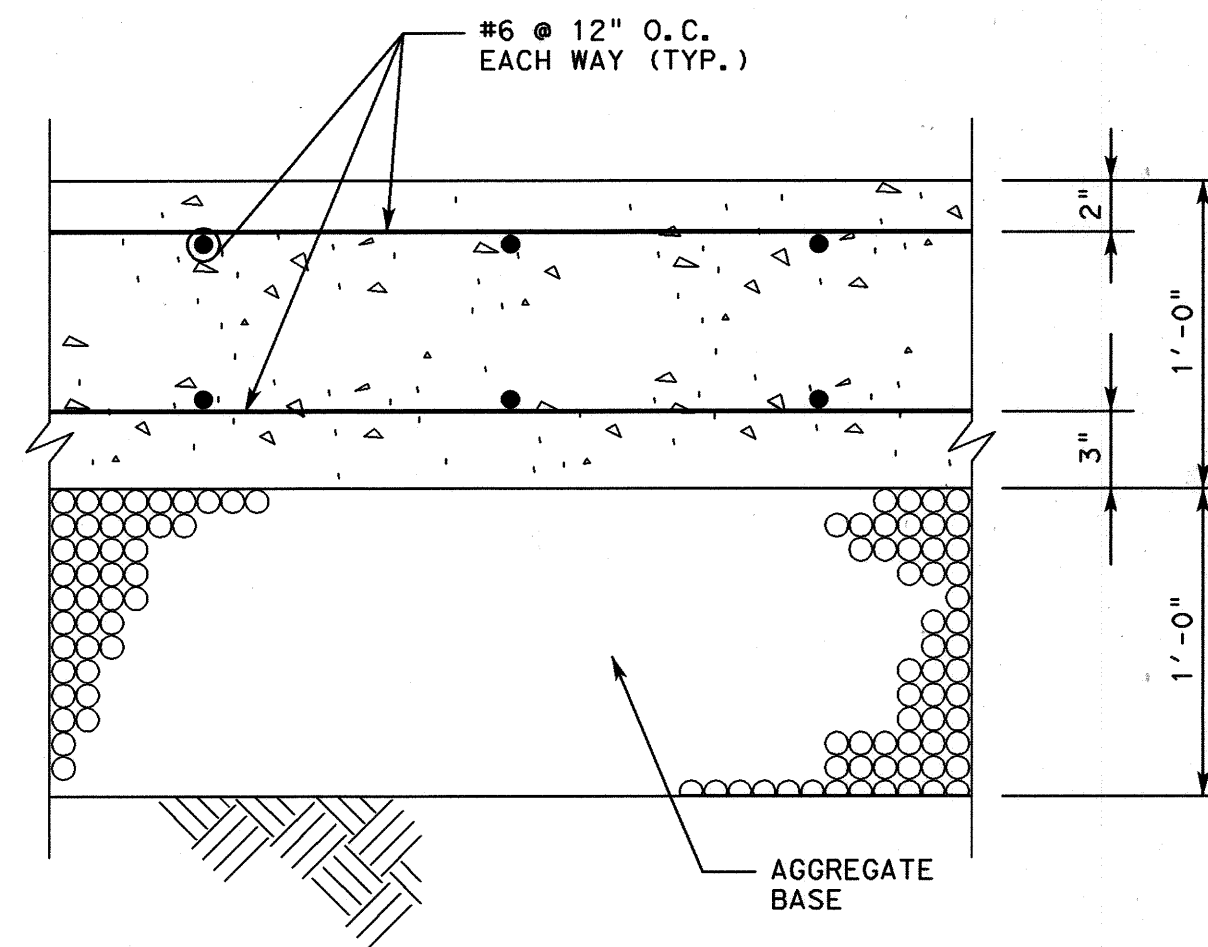




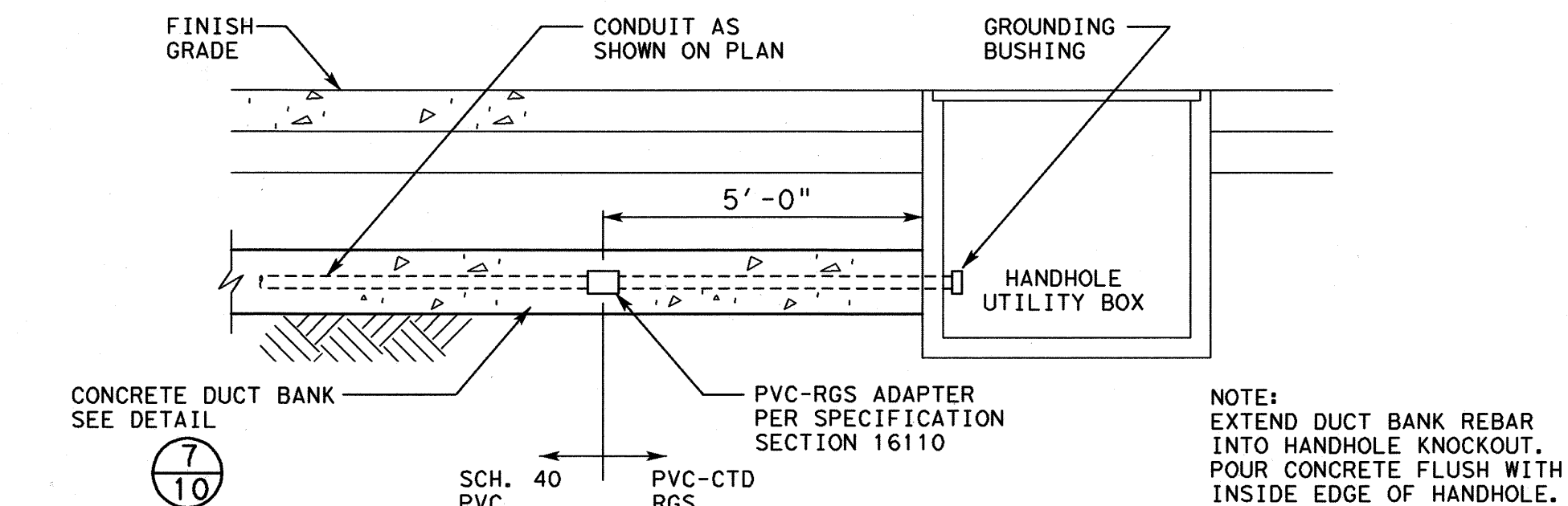
1
10 MANHOLE EXTENSION DETAIL



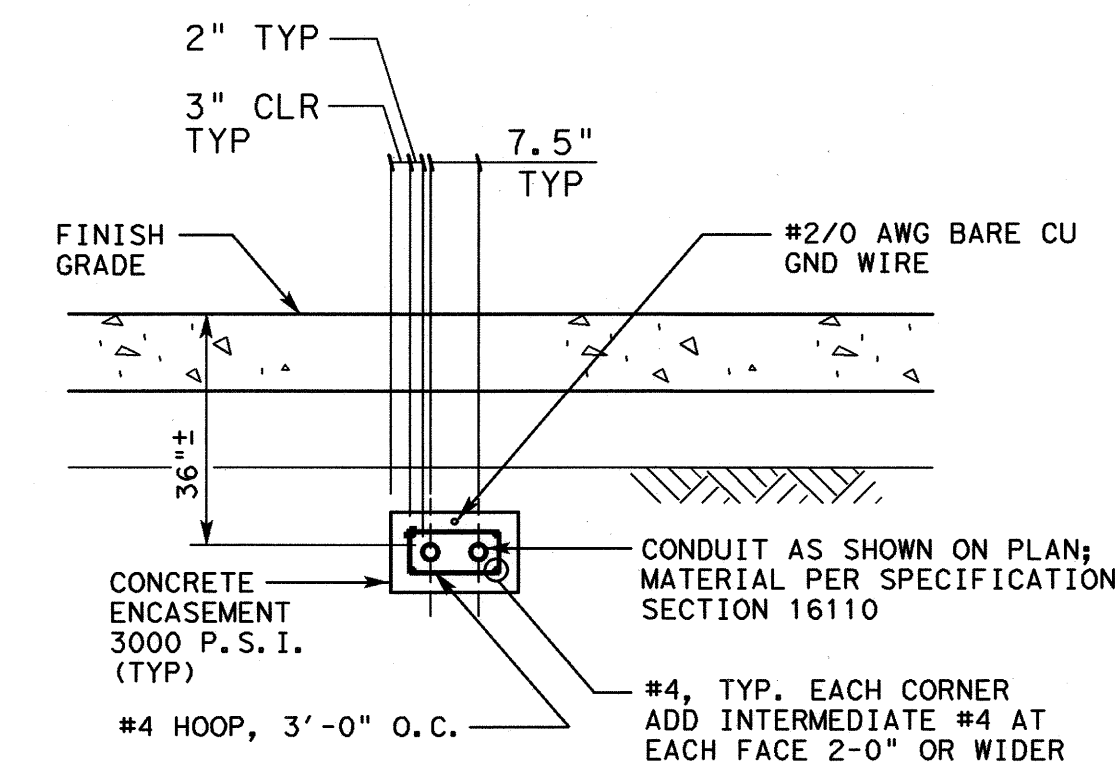
3
10 RETAINING WALL PROTECTION



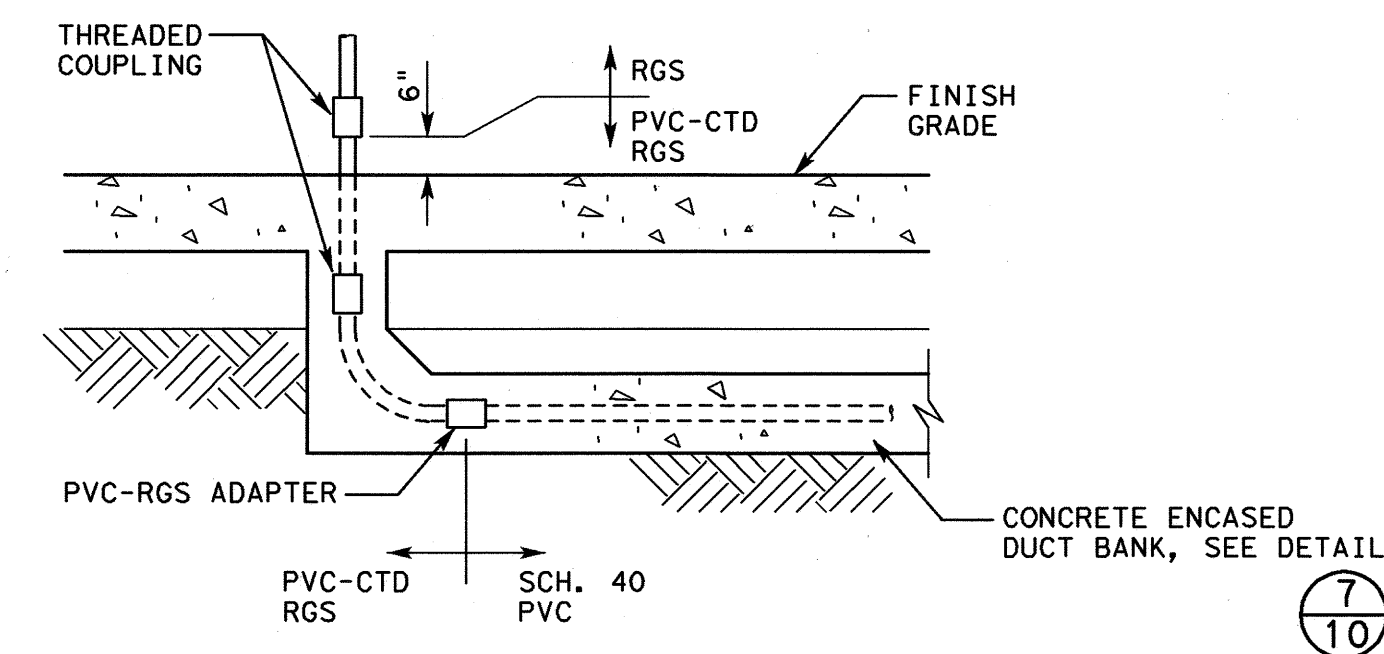
4
10 CONCRETE SLAB SECTION



6
10 TYPICAL HANDHOLE INSTALLATION FOR HANDHOLE GROUNDING



7
10 TYPICAL DUCT BANK CONSTRUCTION DETAIL



8
10 TYPICAL CONDUIT STUB-UP DETAIL

NO.	REVISION	BY	DATE

1. APPLICABLE DESIGN CODES:
LATEST EDITION OF THE UNIFORM BUILDING CODE.
BUILDING CODE REQUIREMENTS FOR STRUCTURAL CONCRETE (ACI 318-99)

3. LOADS:

LIVE LOAD: 12 PSF ON ROOF

EQUIPMENT LOAD: 3 PSF ON RR0F

WIND LOAD:

130 MPH, EXP. C ASCE 7-98

$I=0.77$ $G=0.85$ $KD=0.85$ $GCP1=0.55$ FOR WIND ON OPEN SIDE

$GCP1=0.18$ FOR WIND ON OTHER SIDES

REINFORCED CONCRETE:
FLOOR SLAB $f'c = 5,000$ PSI
ALL OTHER CONCRETE $f'c = 5,000$ PSI U.O.N.
REINFORCING STEEL $f_y = 60,000$ PSI PER ASTM A615

MISC. SHAPES AND PLATES $f_y = 36,000$ PSI PER ASTM A36

- 1.75 KIP/FT UPLIFT (UP WARD)
1.30 KIP/FT DEAD LOAD (DOWN WARD)

124.5 KIP UPLIFT (UP WARD)
119.0 KIP DEAD LOAD (DOWN WARD)

CONTRACTOR IS RESPONSIBLE FOR ALL FOUNDATION CHANGES REQUIRED DUE TO CHANGE OF BUILDING REACTIONS PROVIDED WITH PREFABRICATED BUILDING SUBMITTAL. LOCATION OF JOINTS SHOULD BE MODULATED WITH COLUMN SPACING.

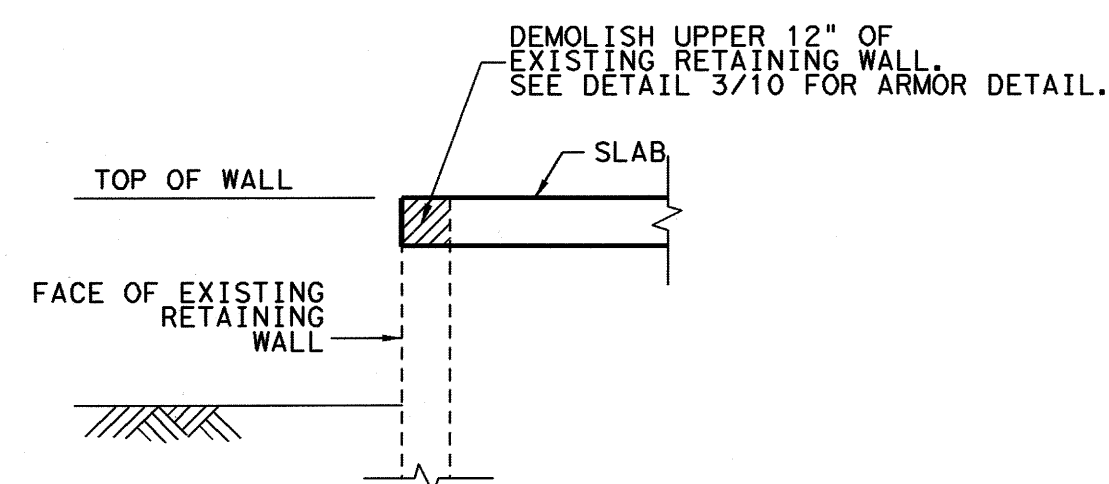
7. ALL DIMENSIONS SHALL BE VERIFIED BY THE BUILDING MANUFACTURER PRIOR TO PLACEMENT OF CONCRETE. PROVIDE STEEL TROWEL FINISH FOR CONCRETE FLOOR. PROVIDE FINISH FOR REVIEW BY OWNER PRIOR TO CONSTRUCTION OF

8. ANCHOR BOLTS FOR BUILDING SHALL BE SIZED AND LOCATED AS RECOMMENDED BY BUILDING MANUFACTURER. CONTRACTOR IS RESPONSIBLE FOR FOUNDATION CHANGES DUE TO ANCHOR BOLT LOCATION AND CAPACITY REQUIREMENTS.

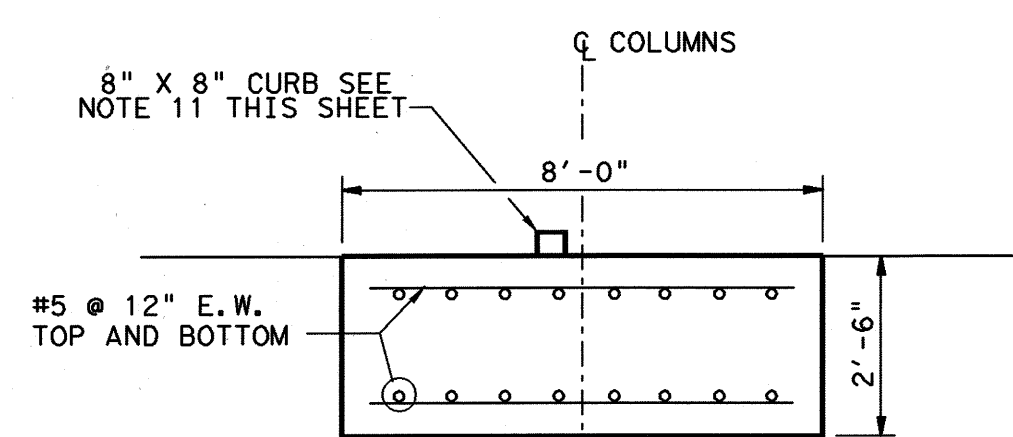
9. ALL REINFORCING SHALL BE HELD SECURELY IN POSITION WITH STANDARD ACCESSORIES DURING PLACING OF THE CONCRETE.

10. ALL ANGLES, BARS, ANCHOR BOLTS, ETC. EMBEDDED IN CONCRETE SHALL BE HOT DIPPED GALVANIZED AFTER FABRICATION, UNLESS SHOWN OTHERWISE.

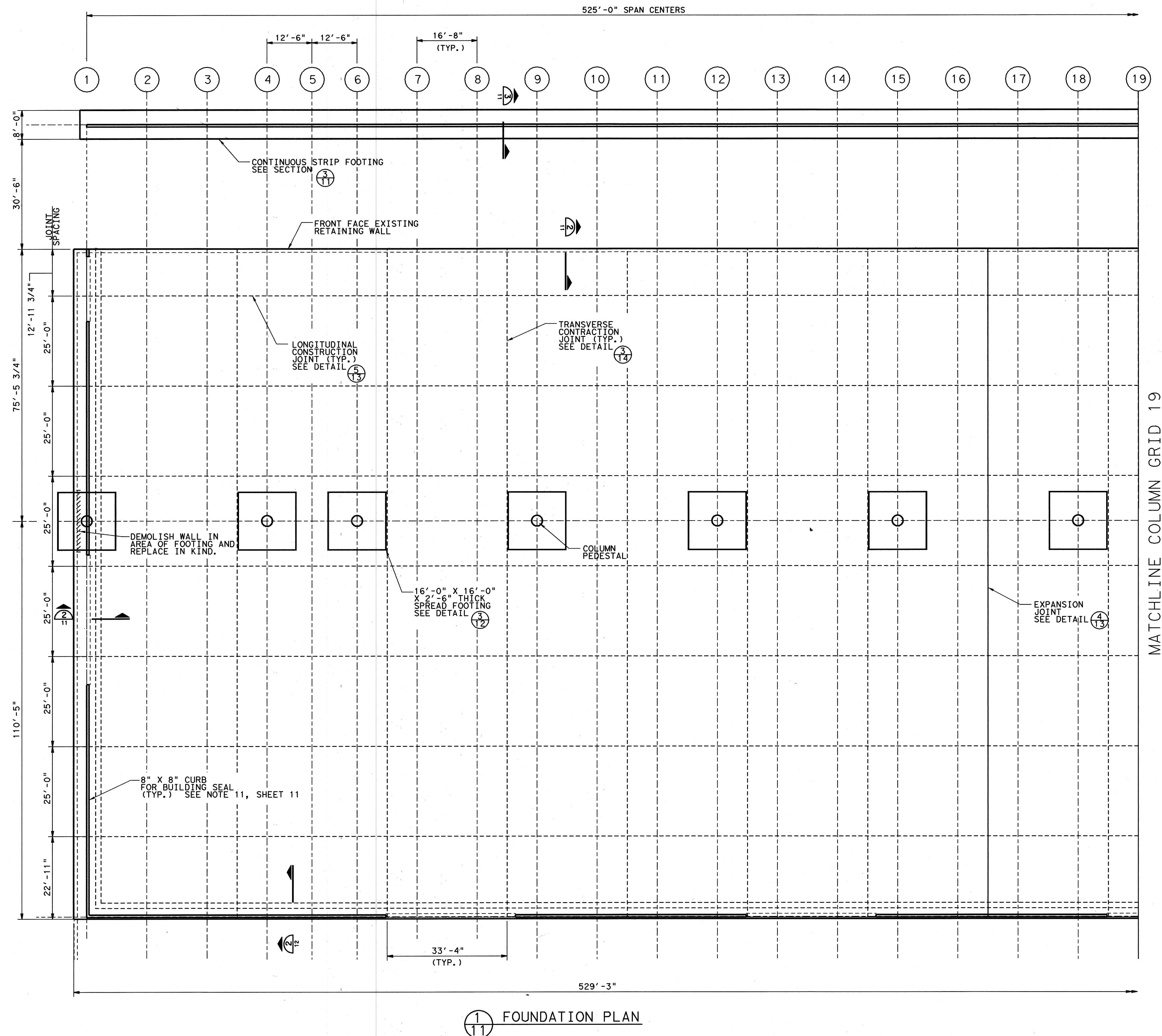
11. CURB PROVIDED FOR BUILDING SEAL MAY VARY IN SIZE AND LOCATION. COORDINATE DETAILS WITH FABRIC BUILDING MANUFACTURER.

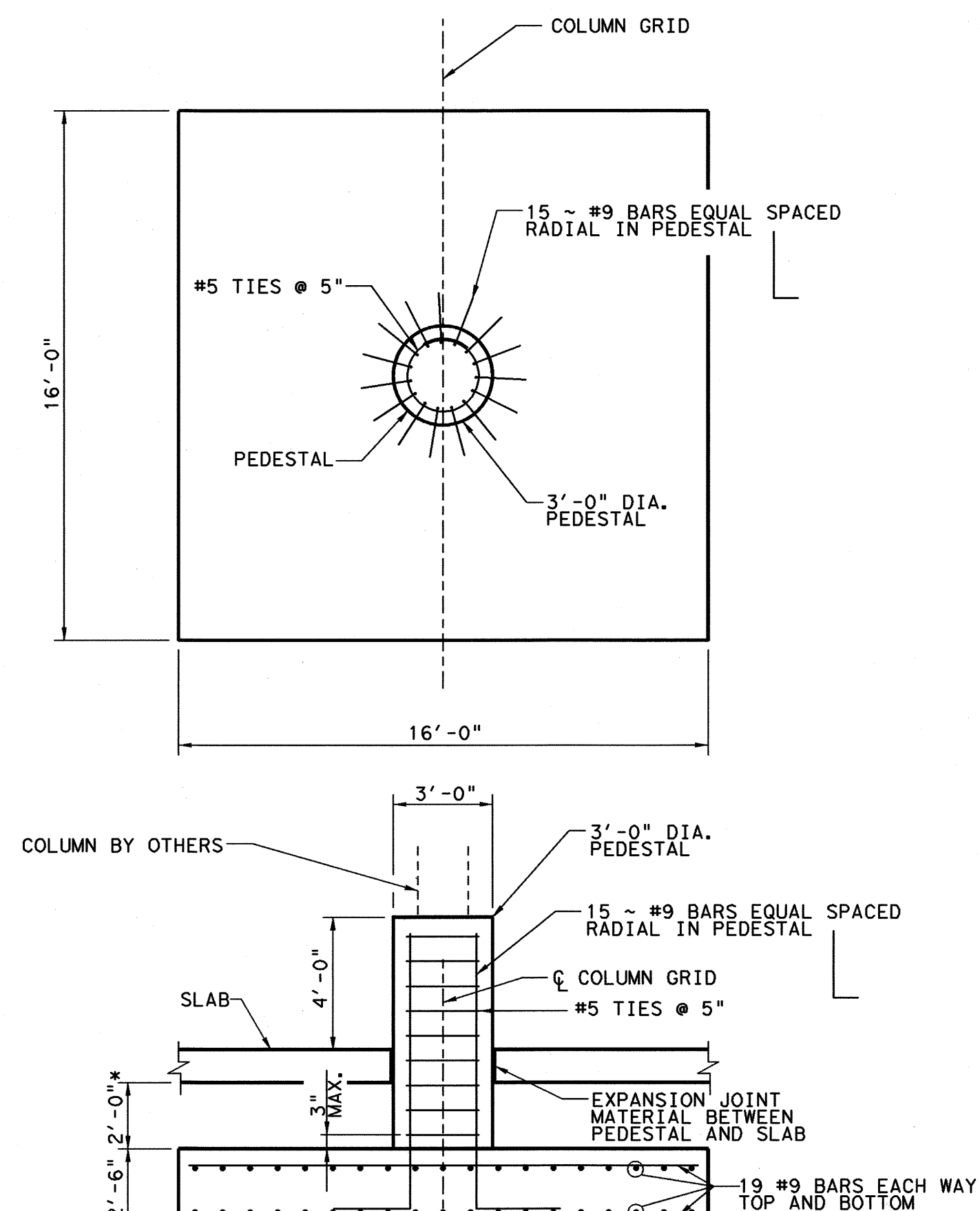
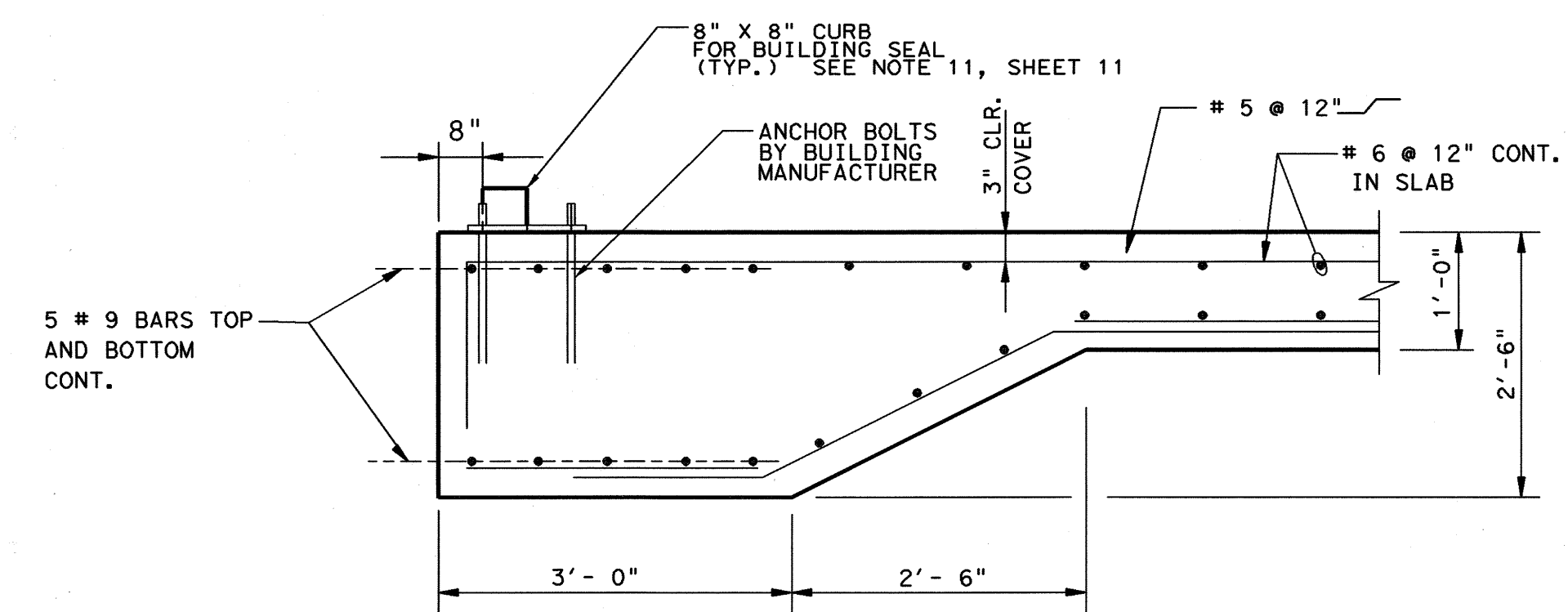
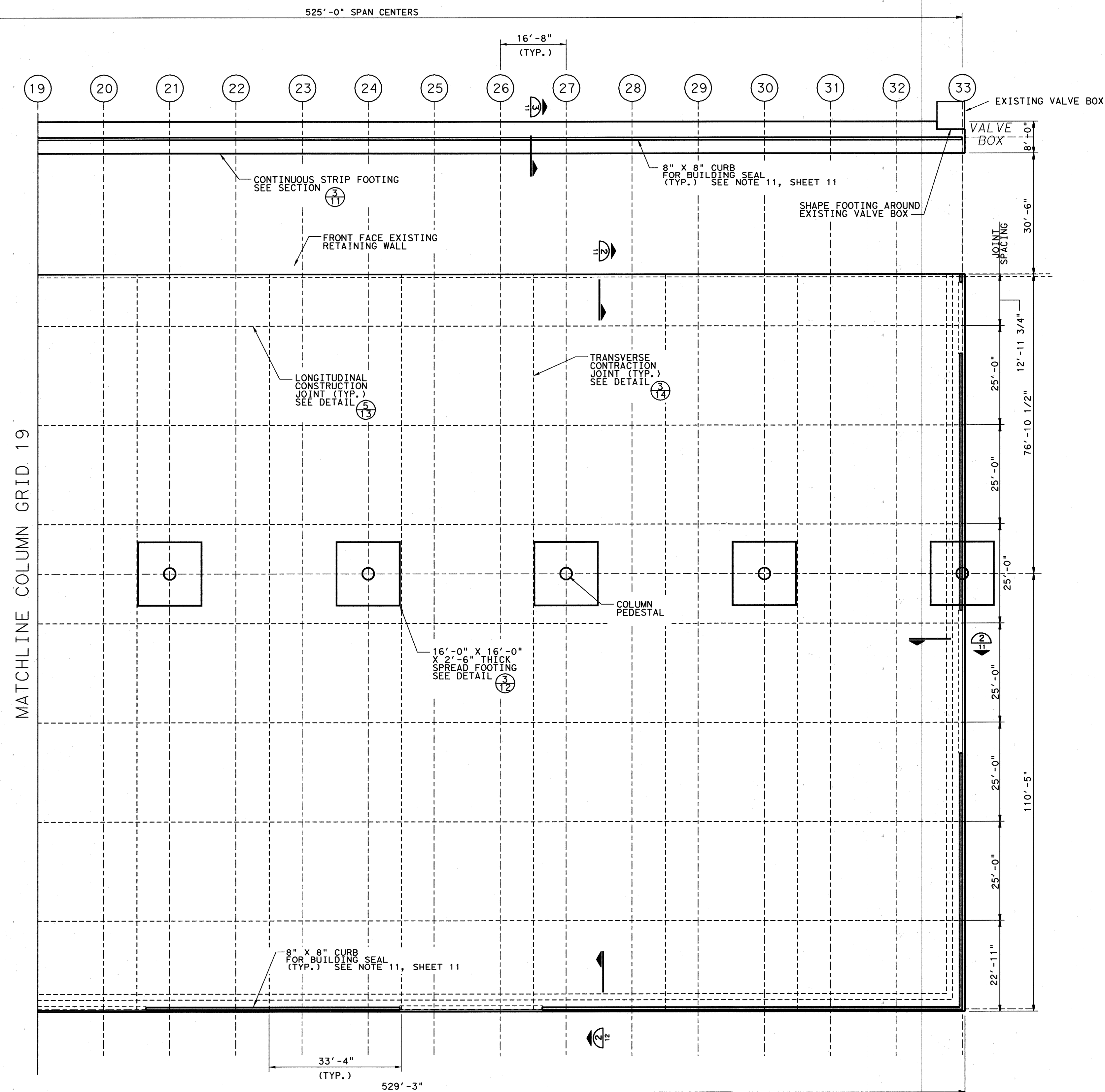


NTS



NTS

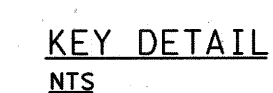


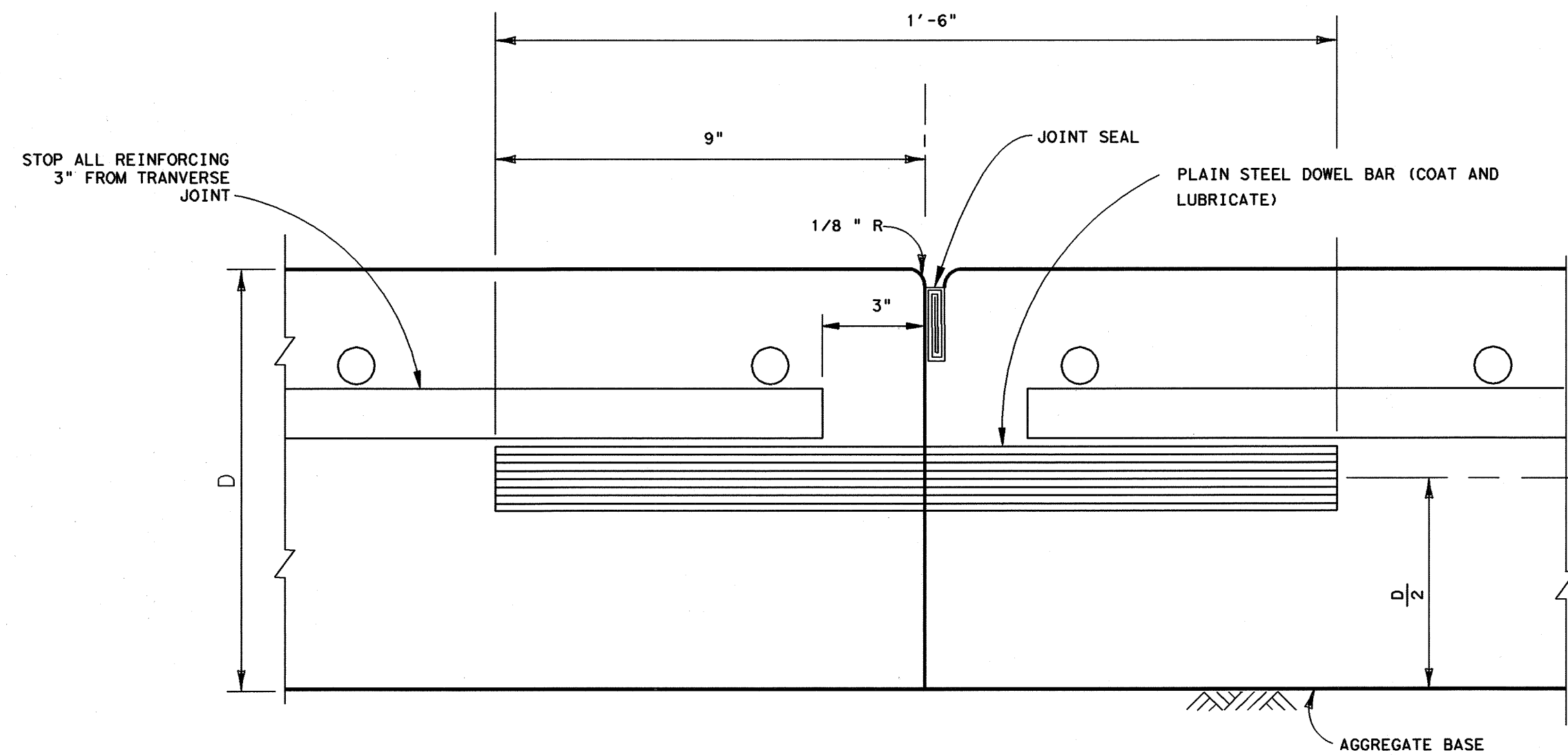




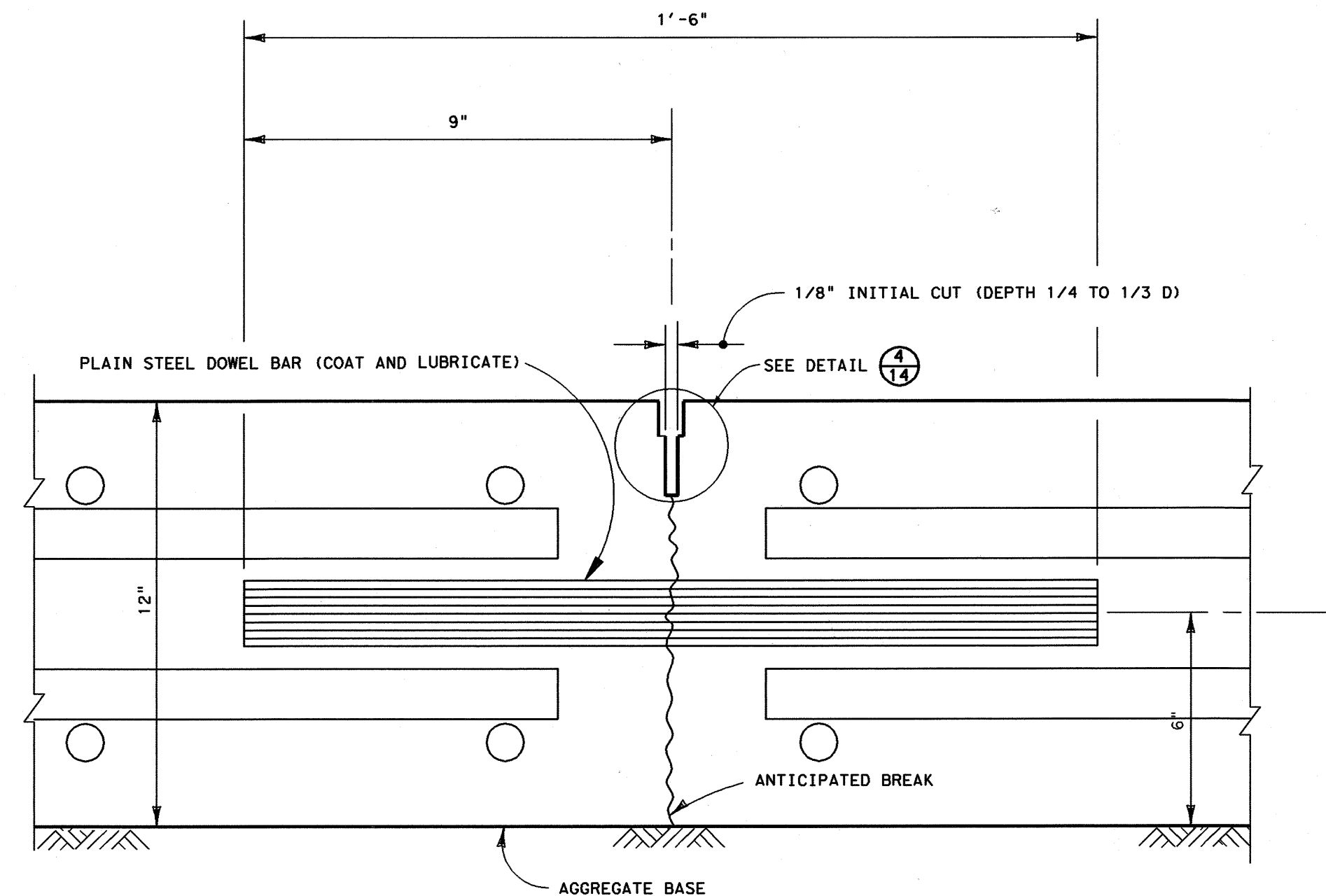
1. EXPANSION JOINTS TO BE PLACED AT LOCATION SHOWN ON PLANS
2. SLAB REINFORCING SHOULD BE TERMINATED 3" ON EITHER SIDE OF OF EXPANSION JOINT.

TR
NTS

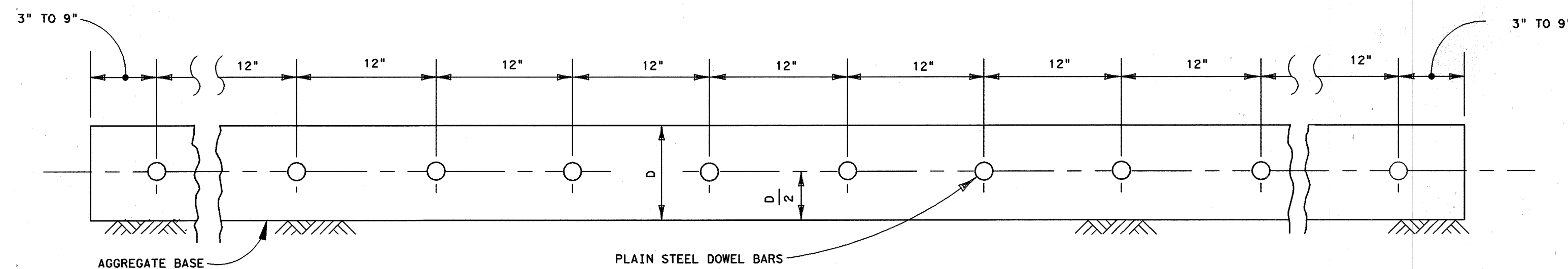




TRANSVERSE BUTT CONSTRUCTION JOINT TO BE USED
AT DISCONTINUANCES OF WORK

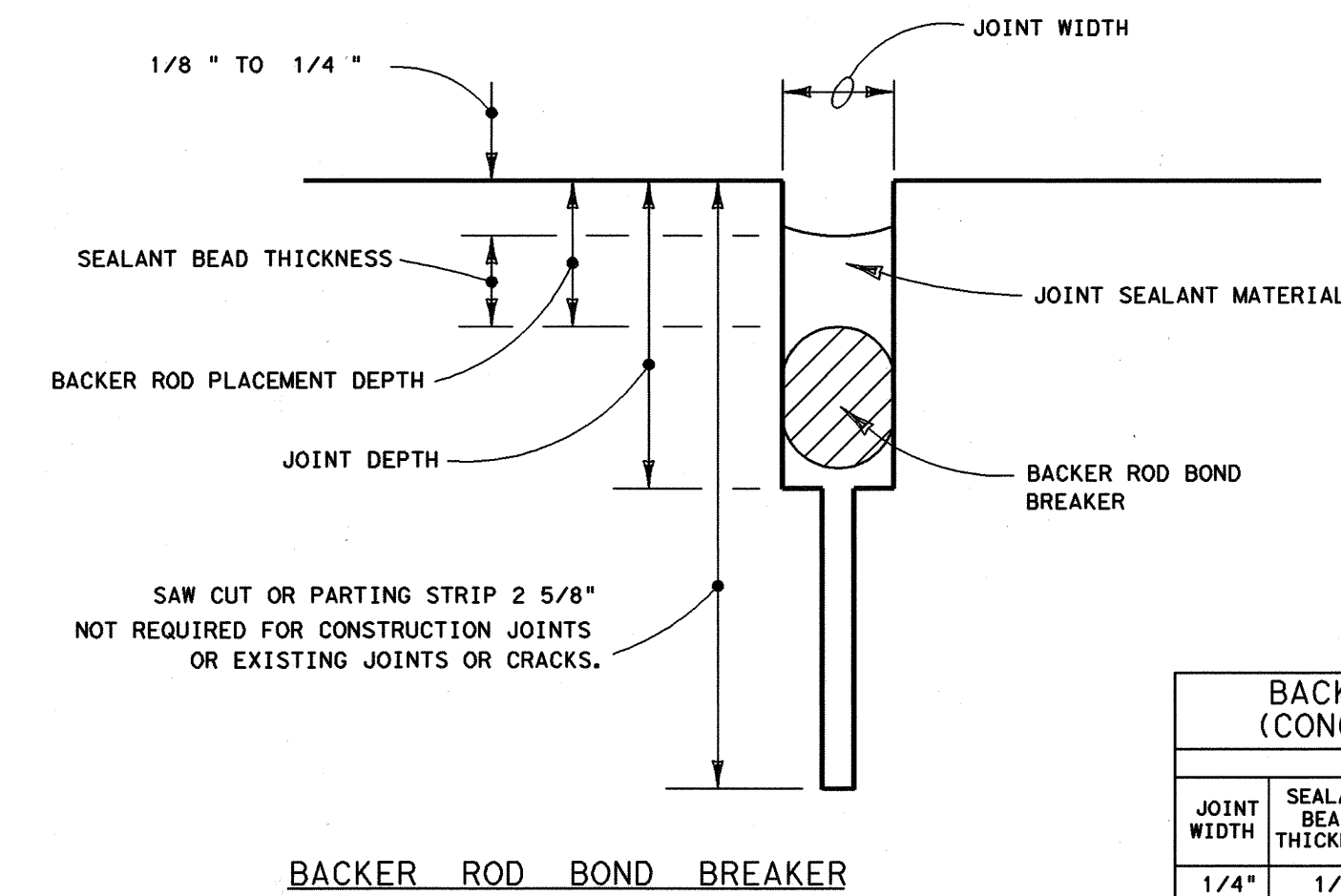


TRANSVERSE CONTRACTION JOINT
SAWED METHOD



TRANSVERSE DOWEL BAR LAYOUT

3
14
NTS
TRANSVERSE CONCRETE SLAB JOINTS



BACKER ROD BOND BREAKER

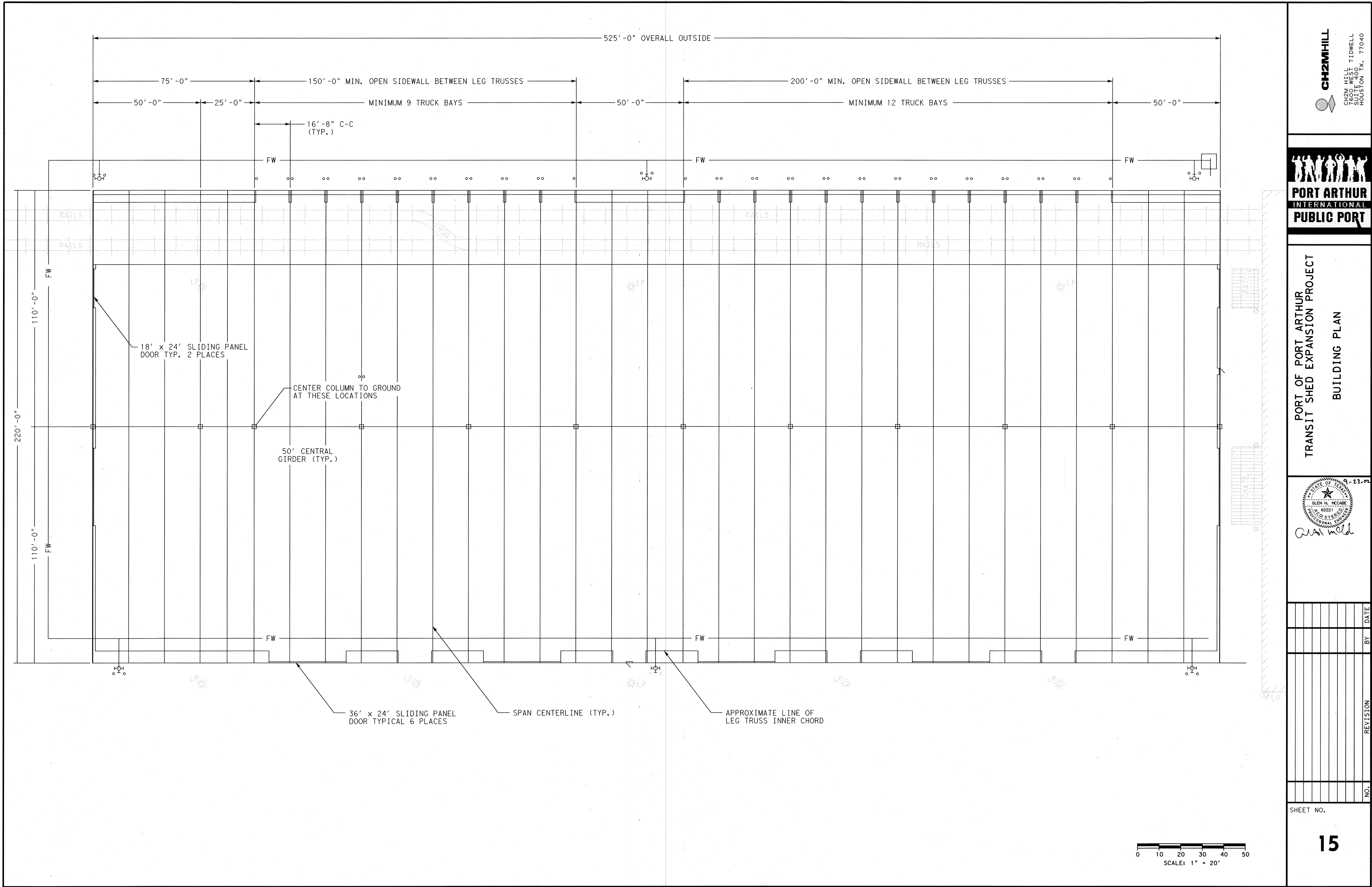
4
14
NTS
CONCRETE JOINT SEAL

BACKER ROD BOND BREAKER (CONCRETE-CONCRETE JOINTS)				
JOINT DIMENSIONS (INCHES)				
JOINT WIDTH	SEALANT BEAD THICKNESS	BACKER ROD DIAMETER	MINIMUM JOINT DEPTH	BACKER ROD PLACEMENT DEPTH
1/4"	1/4"	3/8"	1"	1/2"
3/8"	1/4"	1/2"	1 1/4"	1/2"

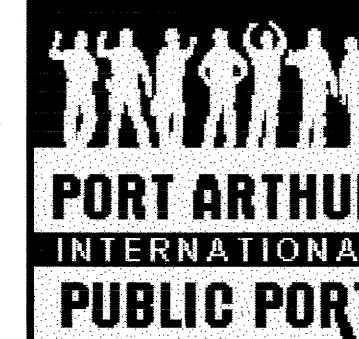
UNLESS OTHERWISE INDICATED ON THE PLANS THE JOINT WIDTH FOR NEW CONSTRUCTION WILL BE 1/4" FOR CONSTRUCTION JOINTS, 3/8" FOR ALL OTHER JOINTS

TRANSVERSE JOINT NOTES:

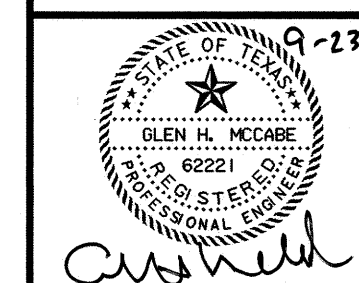
1. TRANSVERSE CONTRACTION JOINTS TO BE SPACED AS SHOWN ON PLANS AND DOWELS REQUIRED AT ALL TRANSVERSE CONTRACTION JOINTS UNLESS OTHERWISE NOTED IN PLANS.
2. ALL DOWELS SHALL BE 1" Ø
3. SEAL ALL JOINTS PER DETAIL 4/14.
4. SEE DETAIL 4/14 FOR JOINT DIMENSIONS.



NO.	REVISION	BY	DATE

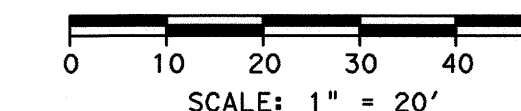
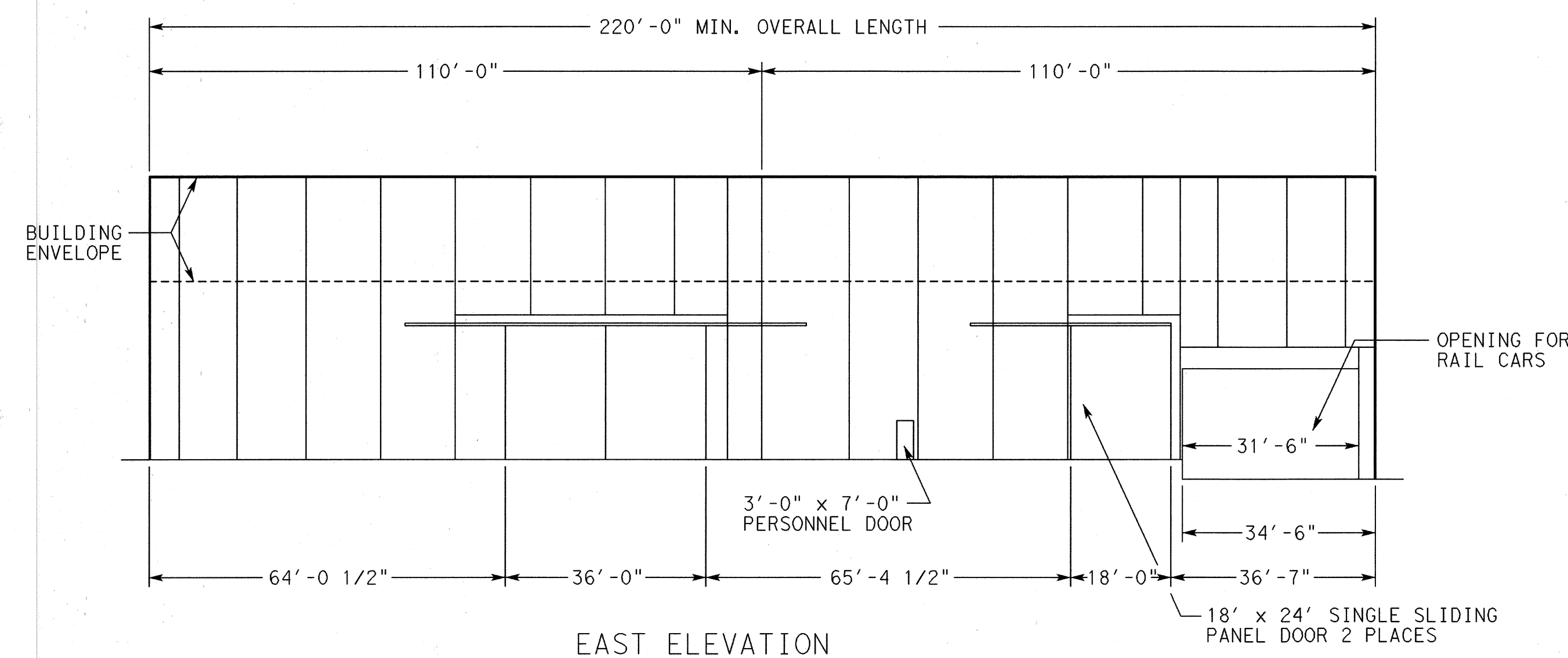
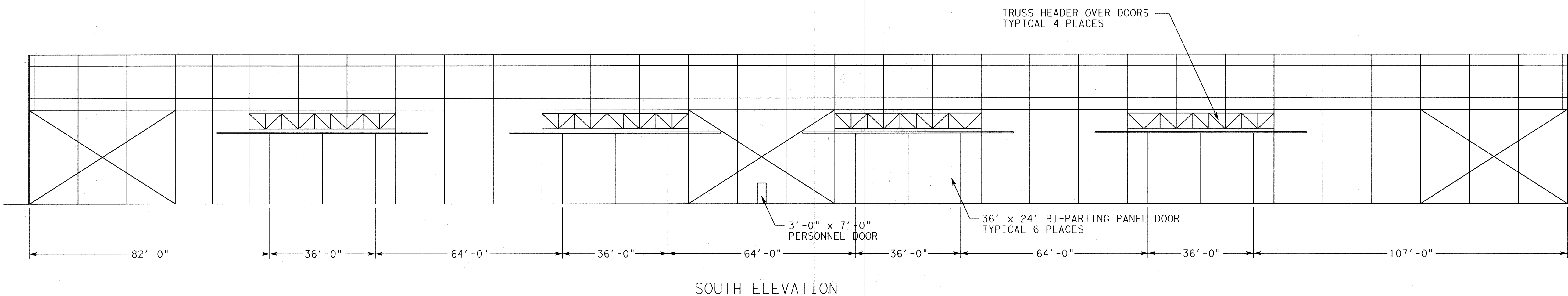


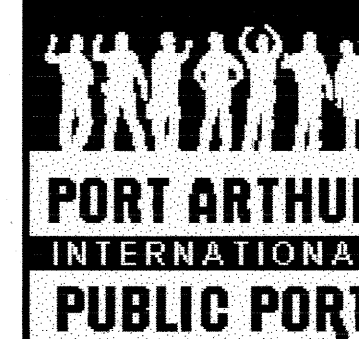
PORT OF PORT ARTHUR
TRANSIT SHED EXPANSION PROJECT
BUILDING ELEVATION

[illegible]

SHEET NO.

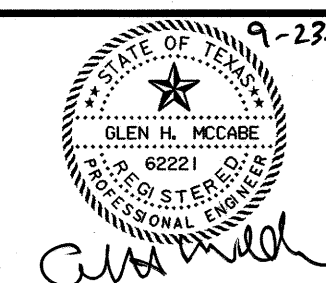
16





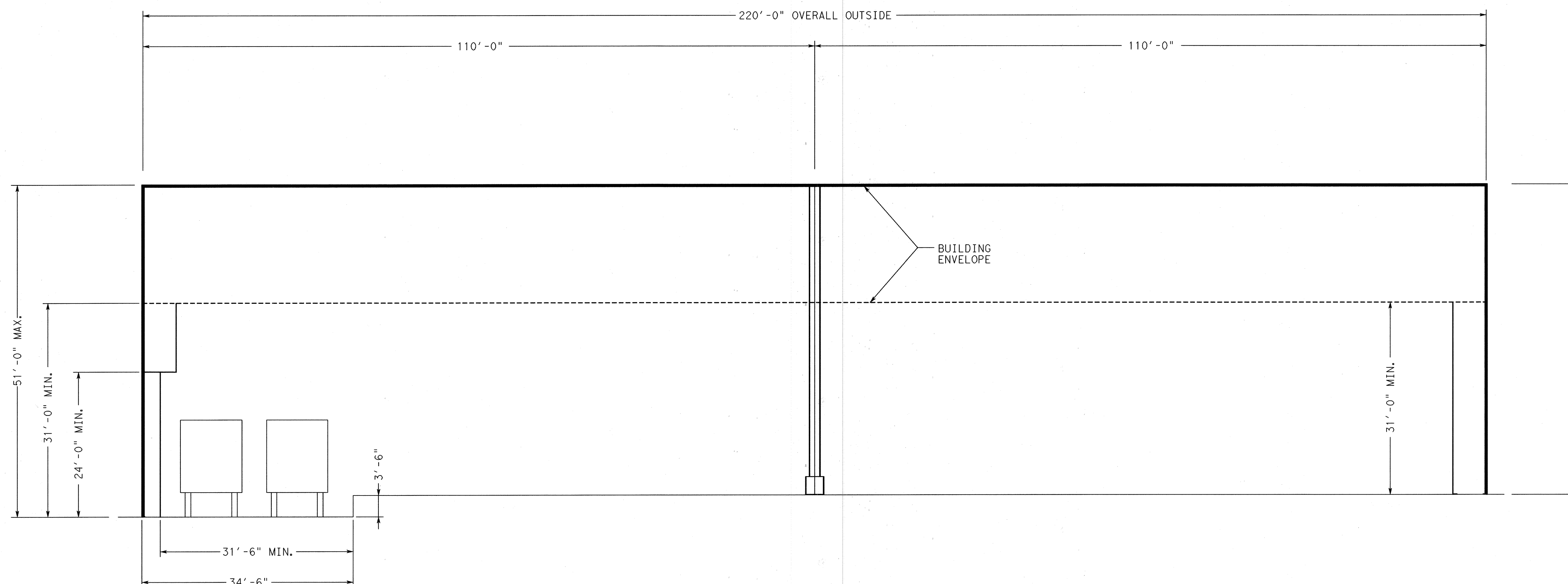
**PORT OF PORT ARTHUR
TRANSIT SHED EXPANSION PROJECT**

BUILDING PROFILE

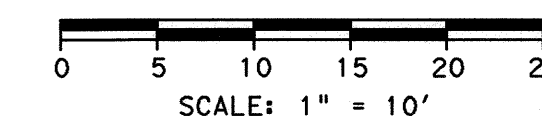
[illegible]

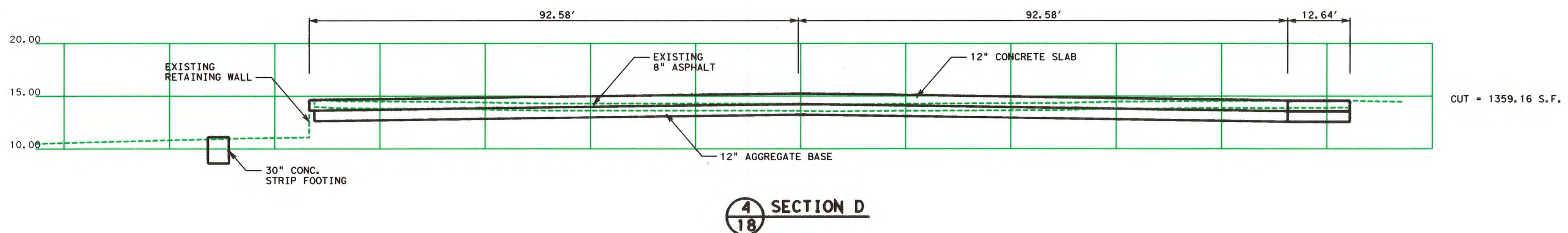
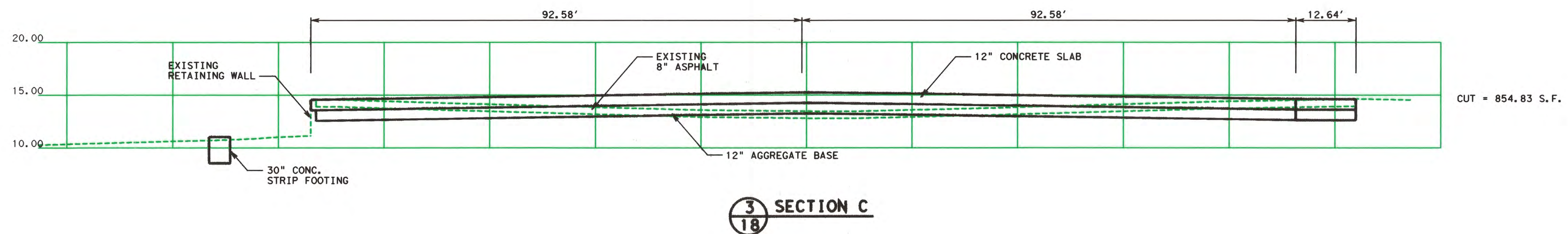
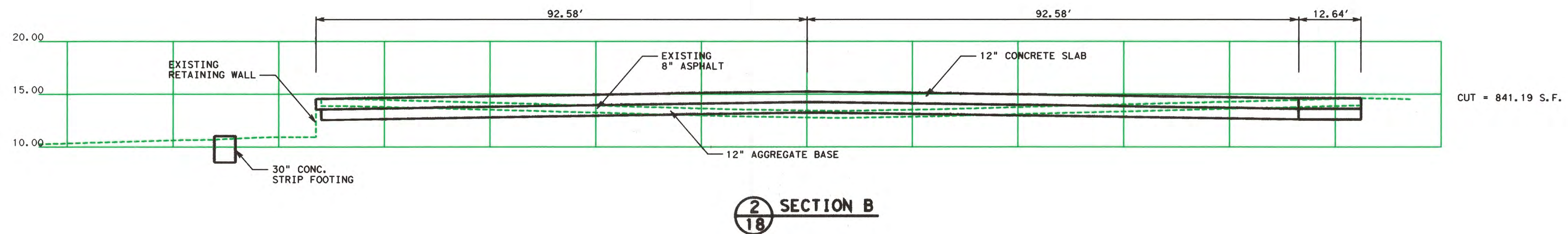
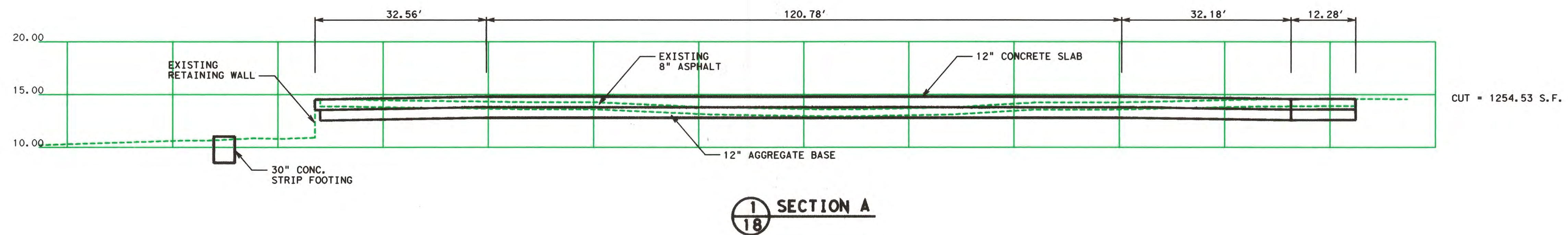
SHEET NO.

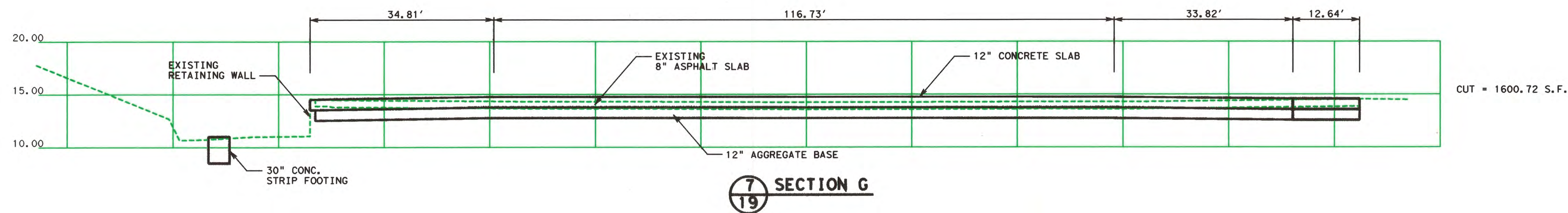
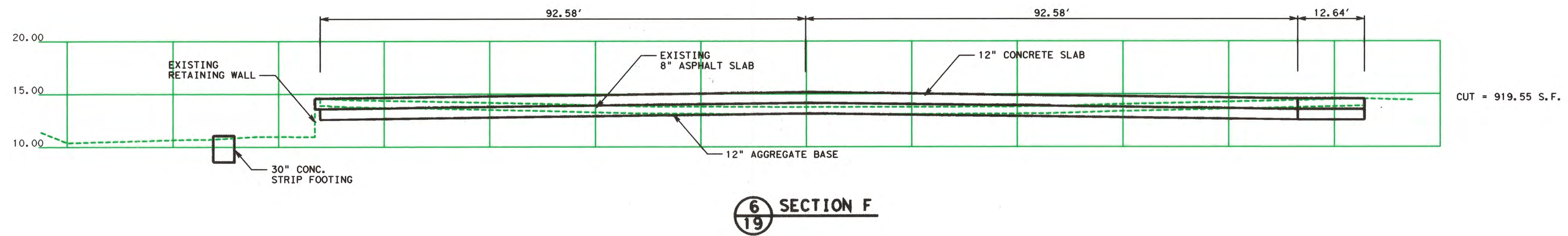
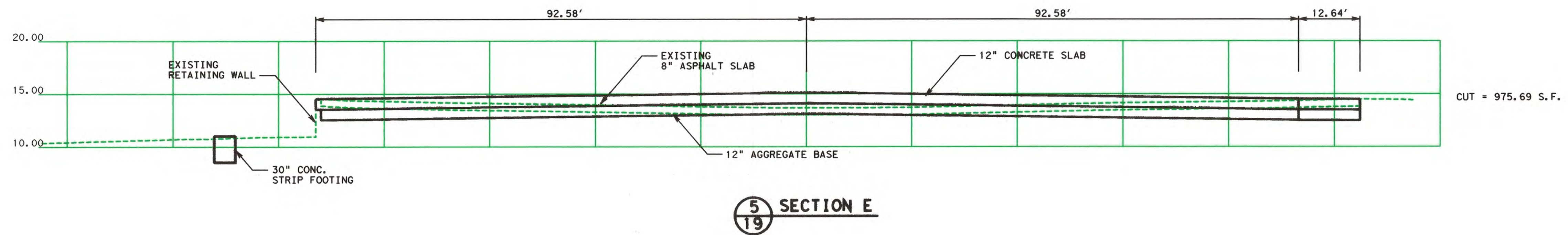
17



NOTE:
MAXIMUM ONE INTERIOR COLUMN LINE.







NO.	REVISION	BY	DATE